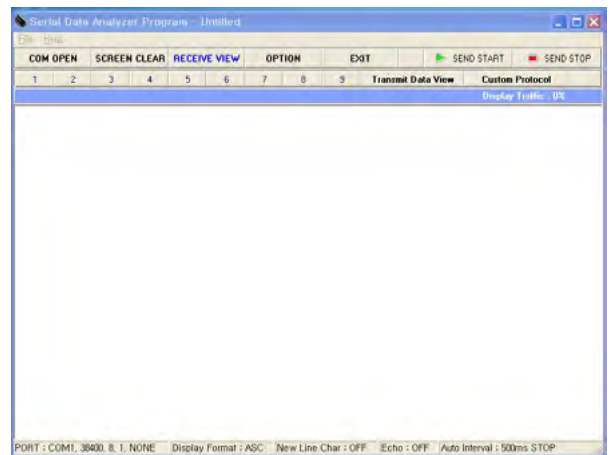
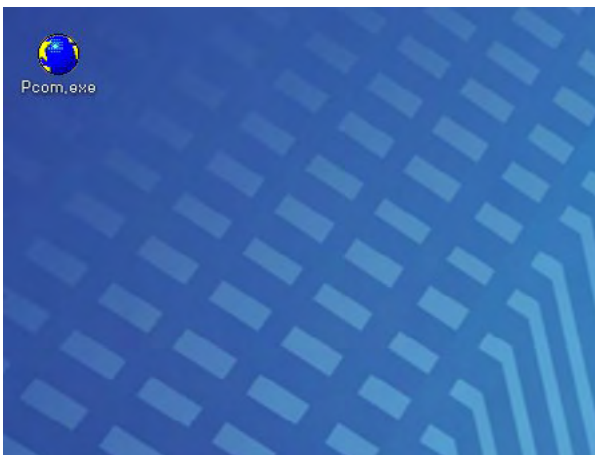


1. Connect the PC and the antenna with a RS232 to RS232 or USB to RS232 cable.

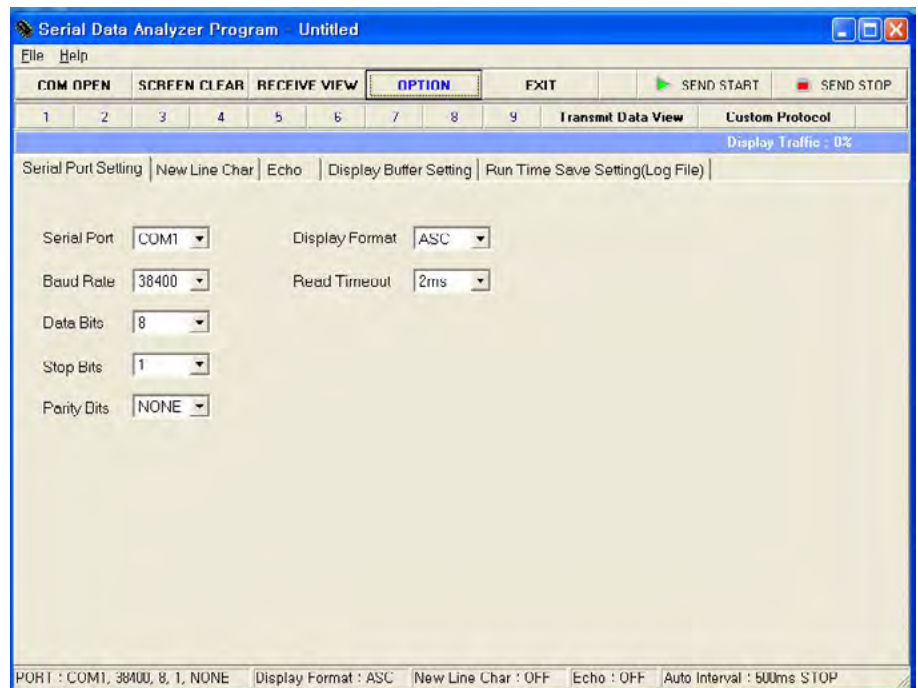


2. Check the RS232 port number, start the terminal program „PCOM.exe“.

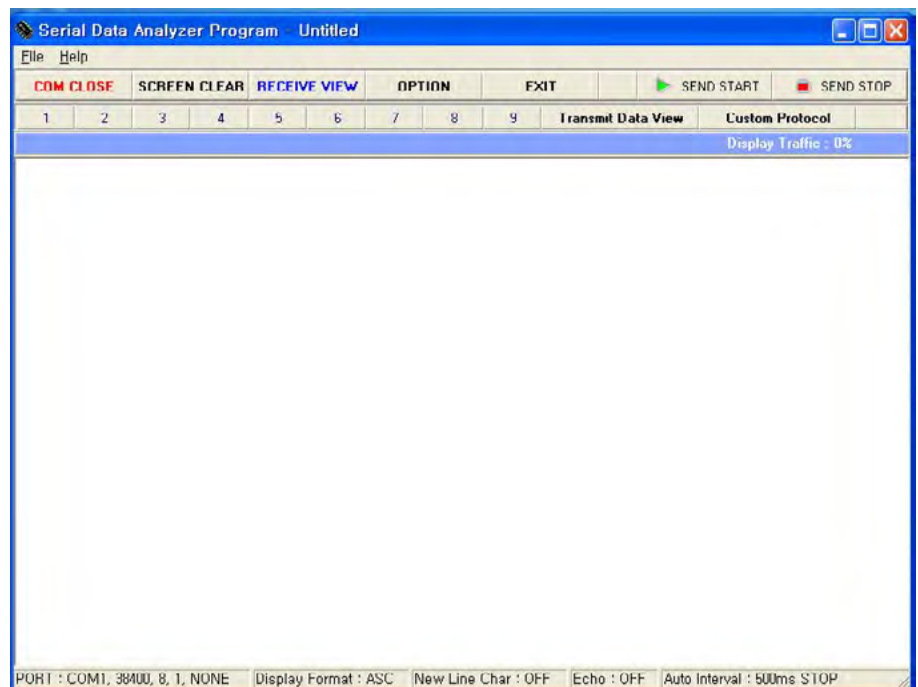


3. Click on the Options Bar, in PCOM menu. Check the settings of the RS232 interface.

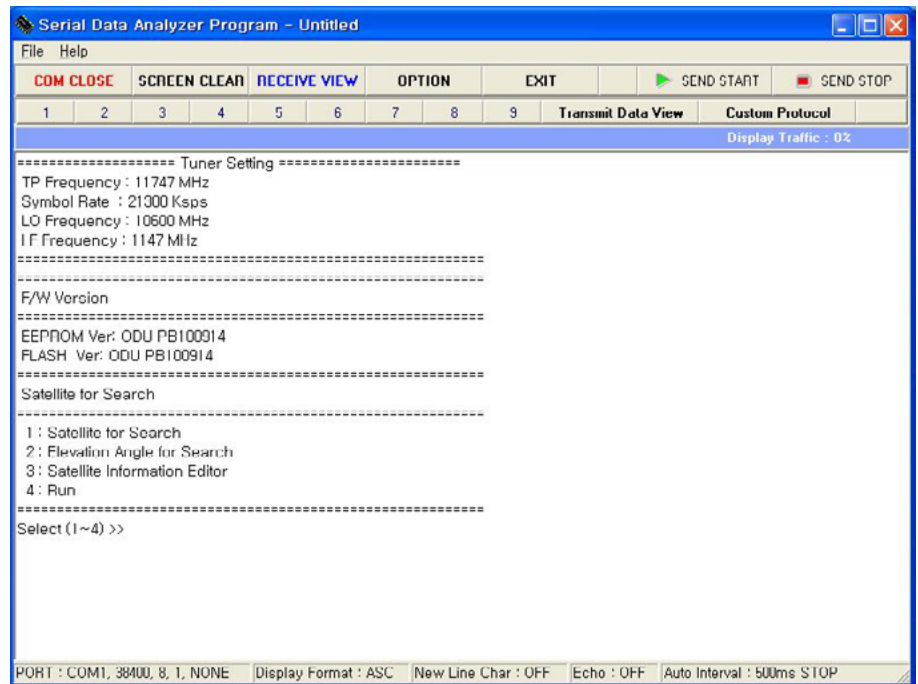
Baudrate: 38400
Datenbits: 8
Stop Bit: 1
Parity Bits: NONE



4. Click the COM OPEN in PCOM menu.

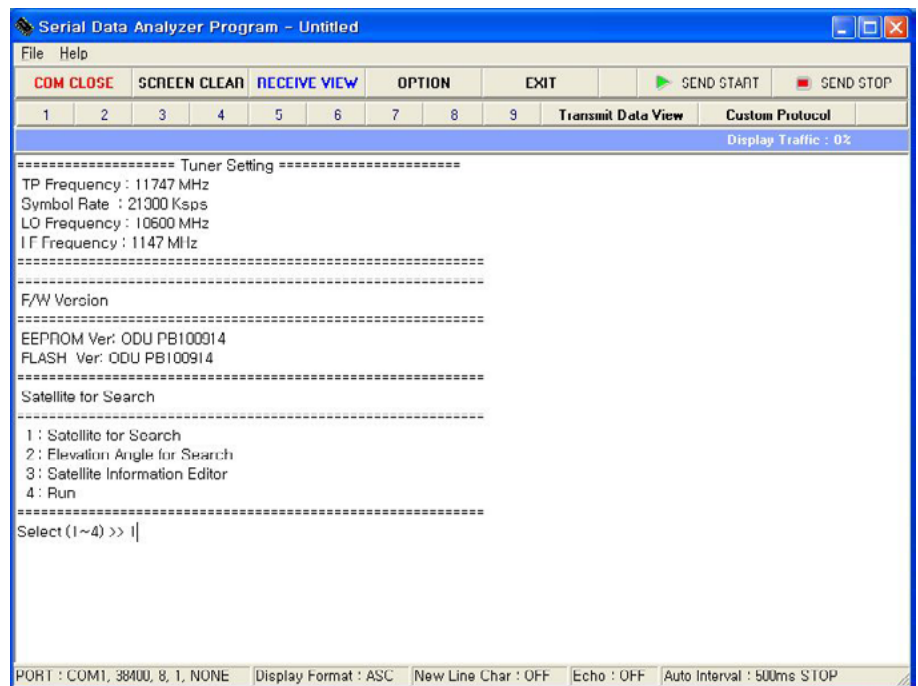


5. Switch on the antenna and then press any key on the PC keyboard.
After about 2 seconds a text (as seen on the image) is displayed).

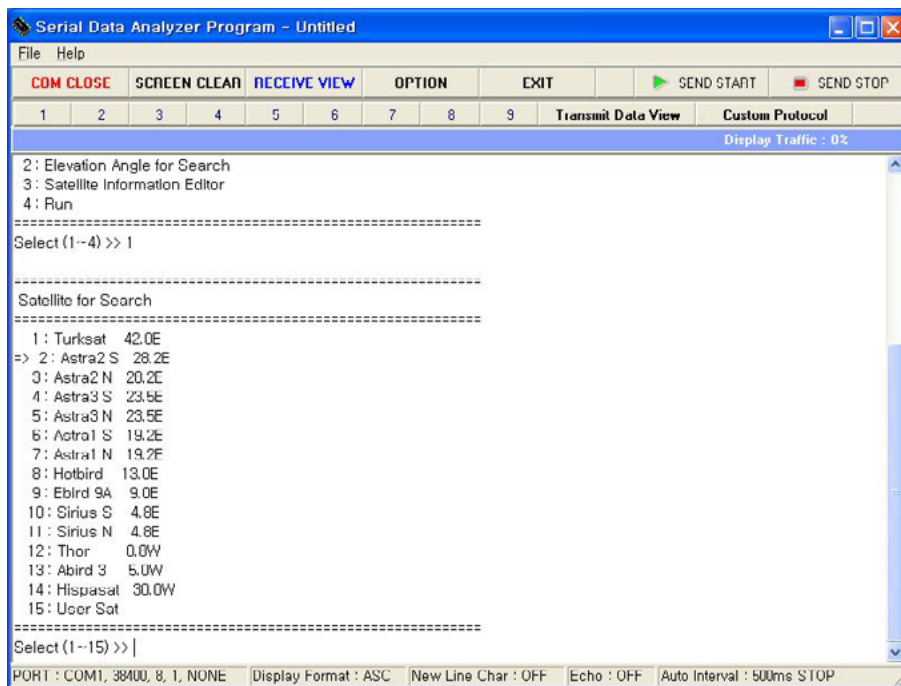


6. To set the desired satellite.

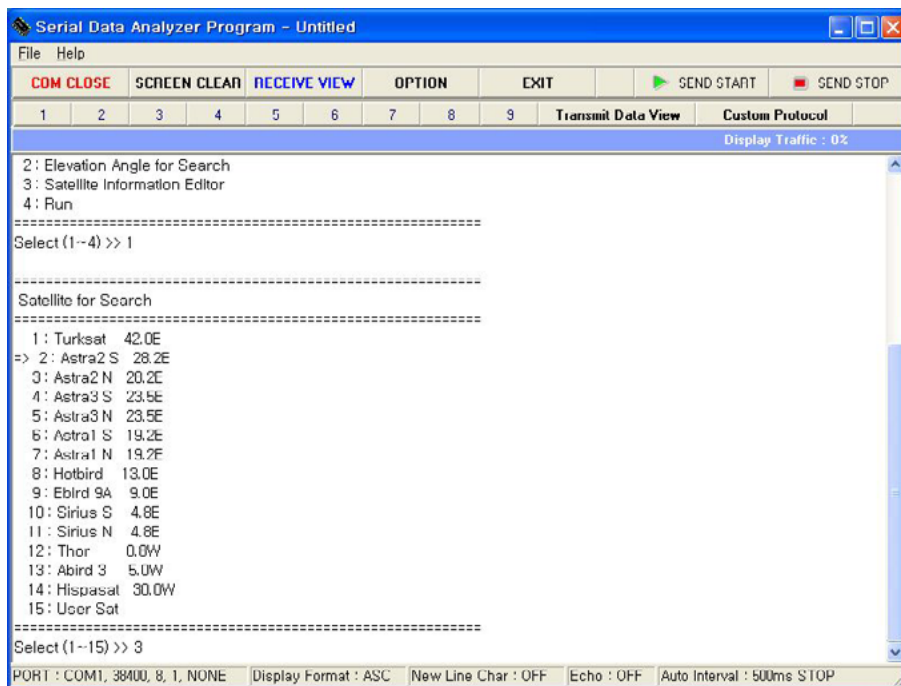
1. Satellite for Search
2. Elevation Angle for Search
3. Satellite Information
(Editor - TP Frequency,
Symbol ate, NID Value, ...)
4. Run



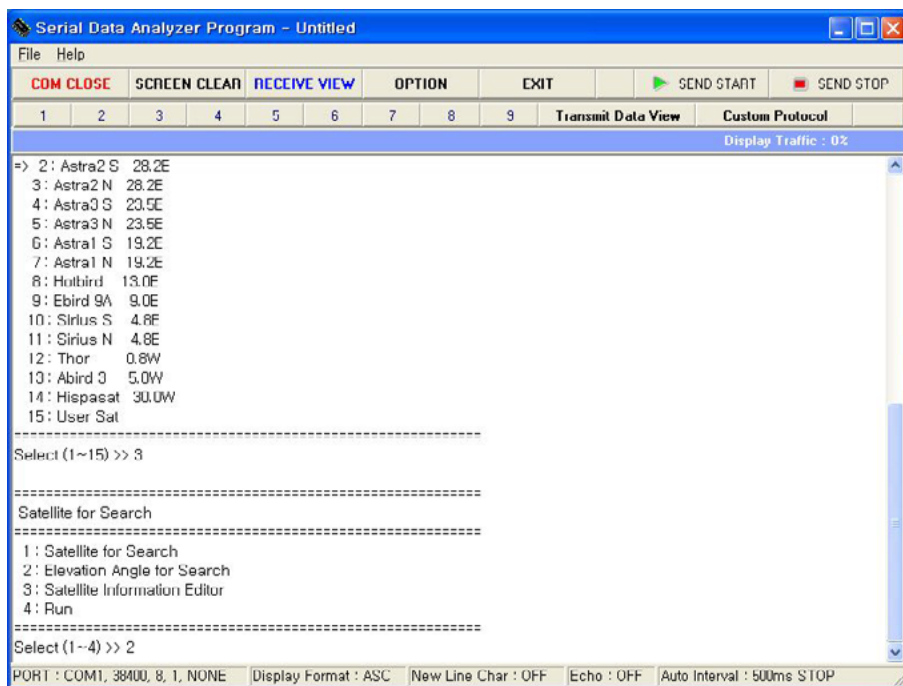
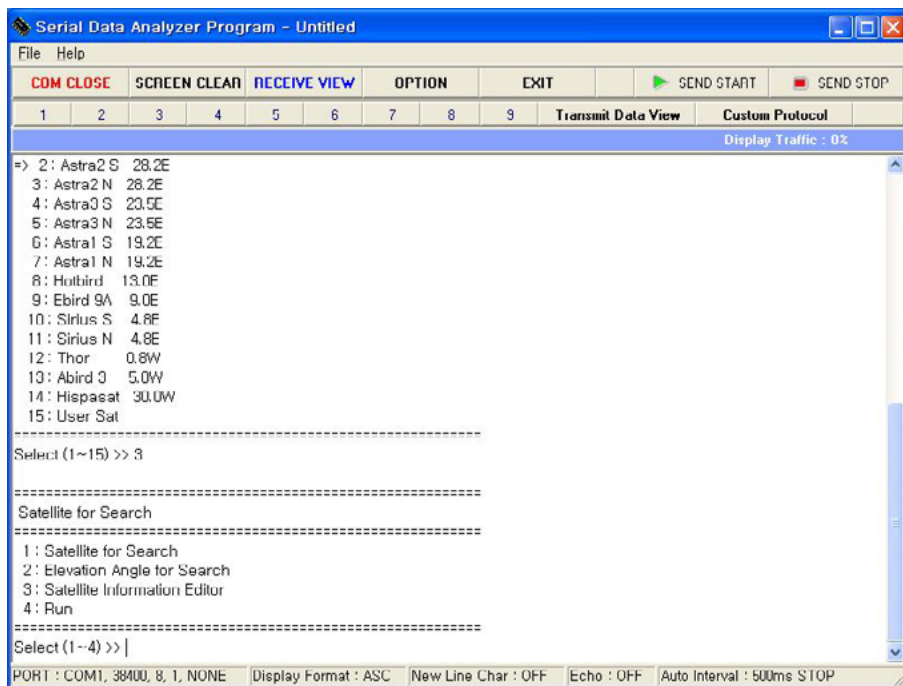
7. Select 1 (Satellite for Search), then the name and location appears in the display.

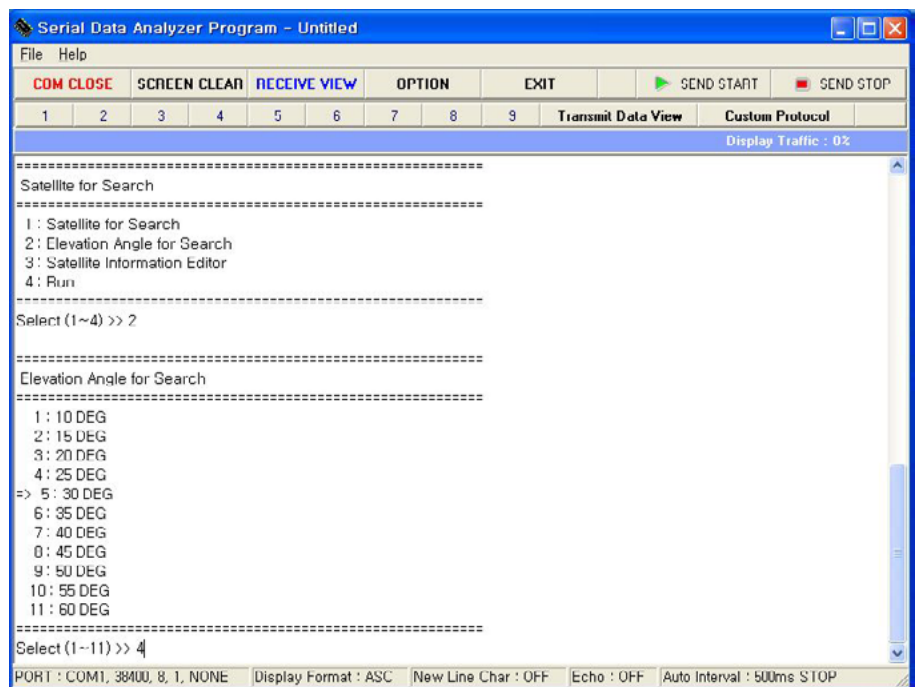
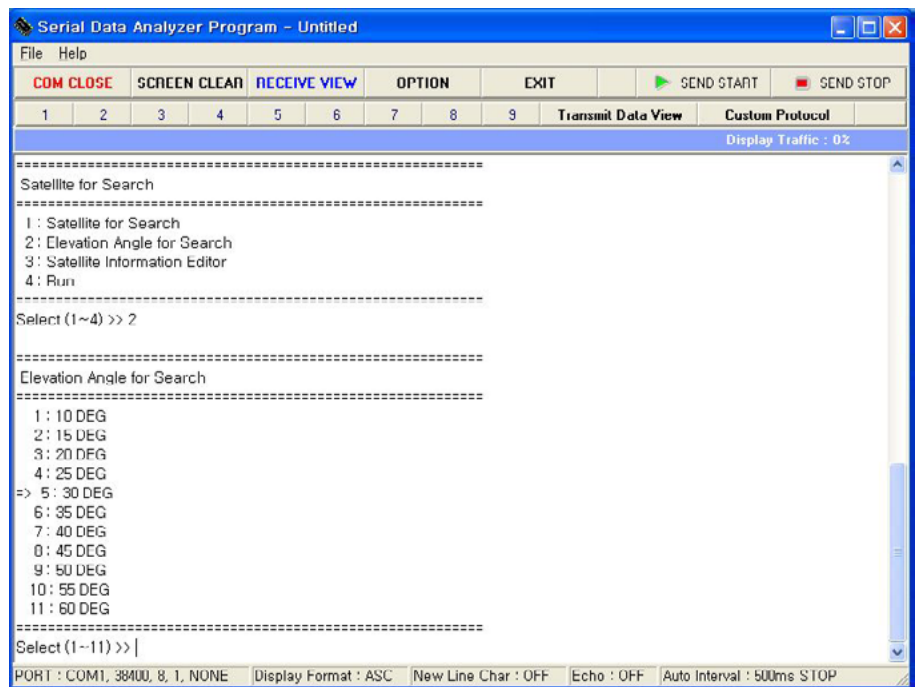


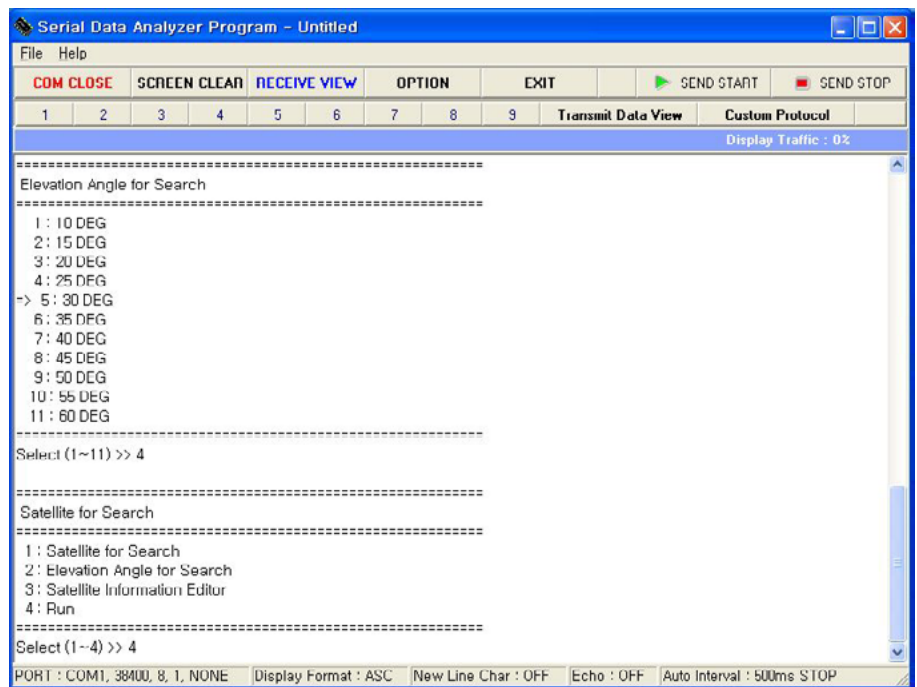
8. Select the target satellite, for example. No. 3 - Astra 2 (28.2 East), and press the Enter key.



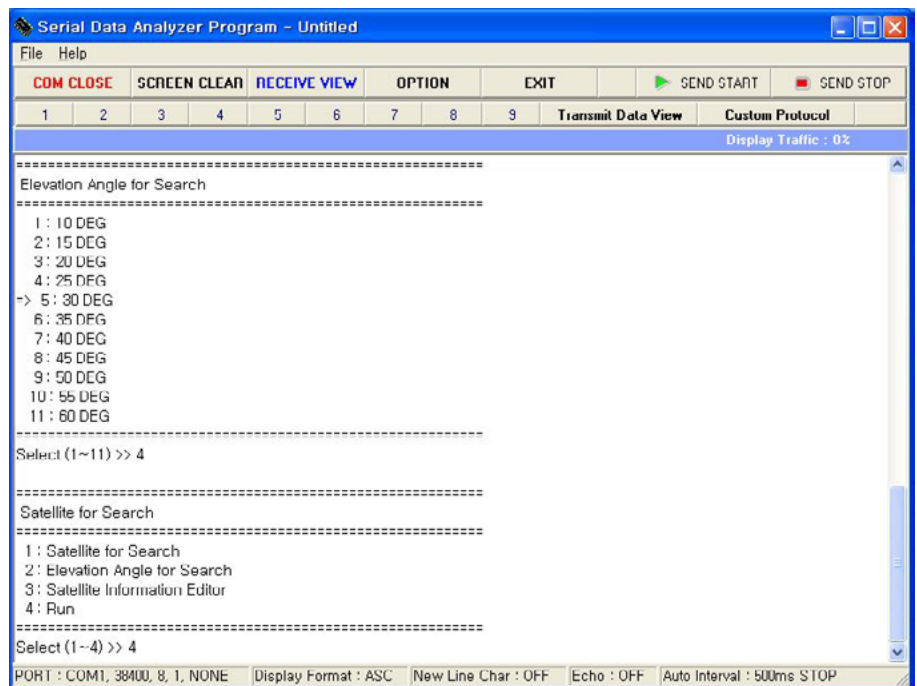
9. After the Satellite has been selected, you return to the first page.
Do you want to change the tilt angle of the antenna now, press No. 2.,

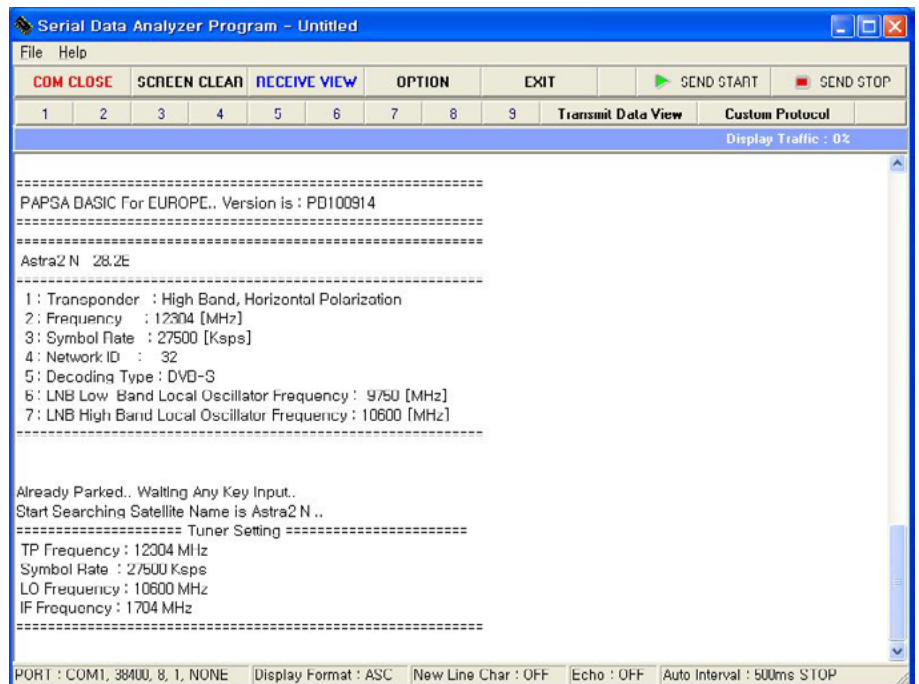
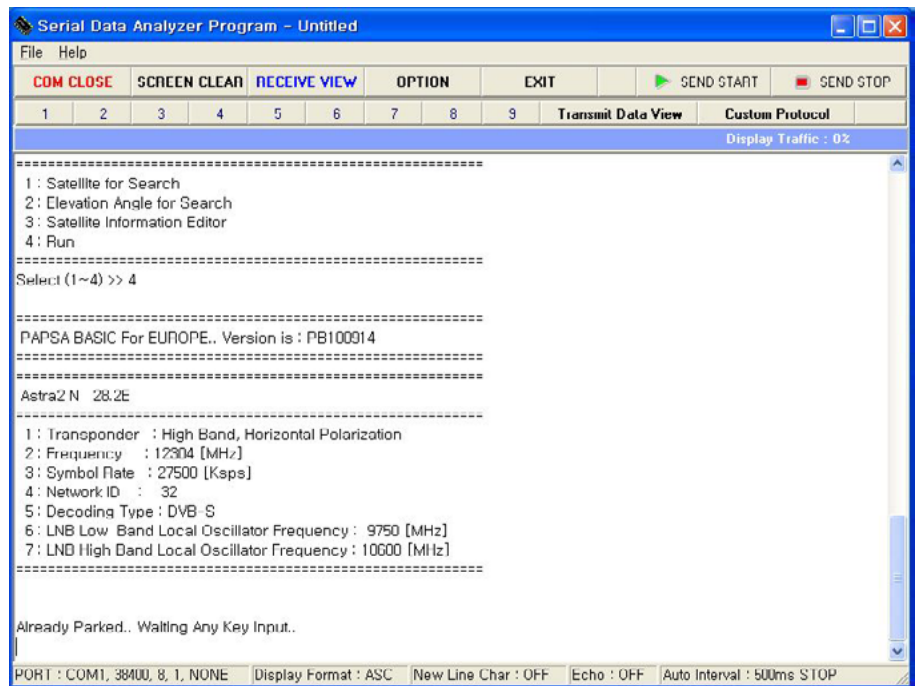






10. Once you have made your settings, you will return to the first page. Now press No. 4 (run).





- 11.** If the text (as seen on the image) is displayed, the update process is complete and all settings are stored in the antenna.